

Mocowanie typu stopa, Seria MS1

- do montażu w siłownikach PRA, TRB, CCL-IS/-IC, CCI, KPZ, 167, CVI, ITS

- Mocowanie siłownika wg normy ISO 15552

- Odpowiednia śr. tłoka 16 20 25 32 40 50 63 80 100 125 160 200 250 320 mm



Normy

Patrz tabela u dołu

Dane techniczne

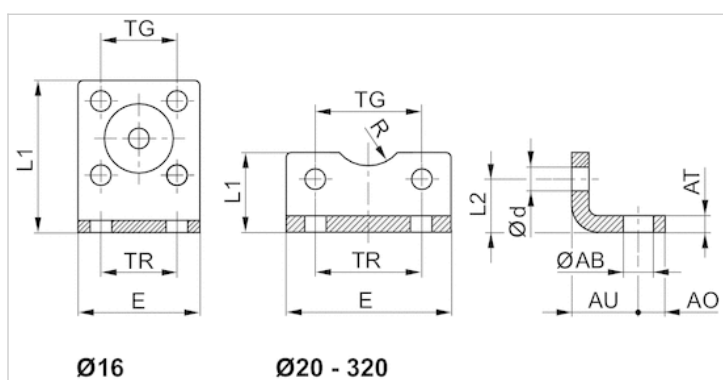
| Numer materiałowy | Śr. tłoka | Dla serii | Normalizacja |
|-------------------|-----------|----------------------------|--------------|
| 1821332053 | 16 mm | KPZ CCI CCL-IC | - |
| 1827002284 | 20 mm | KPZ CCI CCL-IC | - |
| 1827002285 | 25 mm | KPZ CCI CCL-IC | - |
| 3682202000 | 25 mm | 167 | - |
| 1827002286 | 32 mm | KPZ | - |
| 1827001271 | 32 mm | PRA/TRB CCL-IC/-IS CCI CVI | ISO 15552 |
| 3662203000 | 32 mm | 167 | - |
| 1827002287 | 40 mm | KPZ | - |
| 1827001272 | 40 mm | PRA/TRB CCL-IC/-IS CCI CVI | ISO 15552 |
| 3662204000 | 40 mm | 167 | - |
| 1827002288 | 50 mm | KPZ | - |
| 1827001273 | 50 mm | PRA/TRB CCL-IC/-IS CCI CVI | ISO 15552 |
| 3662205000 | 50 mm | 167 | - |
| 1827002289 | 63 mm | KPZ | - |
| 1827001498 | 63 mm | PRA/TRB CCL-IC/-IS CCI CVI | ISO 15552 |
| 3662206000 | 63 mm | 167 | - |
| 1827002290 | 80 mm | KPZ | - |
| 1827001275 | 80 mm | PRA/TRB CCL-IC/-IS CCI CVI | ISO 15552 |
| 3662208000 | 80 mm | 167 | - |
| 1827002291 | 100 mm | KPZ | - |
| 1827001276 | 100 mm | CCI CCL-IC/-IS PRA/TRB CVI | ISO 15552 |
| 3662210000 | 100 mm | 167 | - |
| 1827001310 | 125 mm | PRA/TRB CCL-IS CVI | ISO 15552 |
| 1827001457 | 160 mm | ITS | ISO 15552 |
| 1827001458 | 200 mm | ITS | ISO 15552 |
| 1827001459 | 250 mm | ITS | ISO 15552 |
| 5239010502 | 320 mm | ITS | ISO 15552 |

Zakres dostawy: 2 mocowania typu stopa wł. ze śrubami mocującymi

Informacje Techniczne

| Materiał | |
|----------|------------|
| Materiał | Stal |
| | ocynkowany |
| śruby | Stal |
| | ocynkowany |

Rozmiary



Rozmiary

| Numer materiałowy | Śr. tłoka | ØAB | AO | AT | AU ±0,2 | Ød | E | L1 | L2 | R | TG | TR |
|-------------------|-----------|------|----|--------|---------|-----|-----|------|------|------|-----------|-----|
| 1821332053 | 16 mm | 5.5 | 5 | 3 | 13 | 4.5 | 29 | 35.5 | 13 | 8 | 18 ±0,2 | 18 |
| 1827002284 | 20 mm | 6.6 | 6 | 4 | 16 | 5.4 | 36 | 22 | 16 | 10 | 22 ±0,2 | 22 |
| 1827002285 | 25 mm | 6.6 | 6 | 4 | 16 | 5.4 | 40 | 23 | 17 | 11 | 26 ±0,2 | 26 |
| 3682202000 | 25 mm | 7 | 8 | 4 | 22 | 5.5 | 40 | 21 | 11.5 | 13.5 | 27 | 26 |
| 1827002286 | 32 mm | 6.6 | 8 | 5 | 18 | 6.6 | 50 | 24 | 16 | – | 32 | 32 |
| 1827001271 | 32 mm | 7 | 8 | 4 ±0,3 | 24 | 6.6 | 48 | 25 | 15.5 | 15 | 32,5 ±0,2 | 32 |
| 3662203000 | 32 mm | 7 | 8 | 5 | 24 | 5.5 | 47 | 26 | 16 | 15 | 32 | 32 |
| 1827002287 | 40 mm | 9 | 8 | 5 | 20 | 6.6 | 60 | 29.5 | 21.5 | – | 42 | 42 |
| 1827001272 | 40 mm | 10 | 10 | 4 ±0,3 | 28 | 6.6 | 56 | 26 | 17 | 17.5 | 38 ±0,2 | 36 |
| 3662204000 | 40 mm | 9 | 11 | 5 | 31 | 6.6 | 56 | 28 | 16 | 20 | 40 | 36 |
| 1827002288 | 50 mm | 9 | 8 | 6 | 24 | 9 | 68 | 30 | 22 | – | 50 | 50 |
| 1827001273 | 50 mm | 10 | 11 | 5 ±0,3 | 32 | 9 | 68 | 32 | 21.5 | 20 | 46,5 ±0,2 | 45 |
| 3662205000 | 50 mm | 9 | 12 | 6 | 33 | 6.6 | 63 | 35 | 22 | 23 | 46 | 45 |
| 1827002289 | 63 mm | 11 | 12 | 6 | 27 | 9 | 84 | 39 | 28.5 | – | 62 | 62 |
| 1827001498 | 63 mm | 10 | 13 | 5 ±0,3 | 32 | 9 | 78 | 34 | 21.5 | 22.5 | 56,5 ±0,2 | 50 |
| 3662206000 | 63 mm | 9 | 12 | 6 | 36 | 9 | 81 | 40 | 20.5 | 23 | 59 | 50 |
| 1827002290 | 80 mm | 11 | 12 | 8 | 30 | 11 | 102 | 36.5 | 24.5 | – | 82 | 82 |
| 1827001275 | 80 mm | 12 | 16 | 6 ±0,5 | 41 | 11 | 98 | 47 | 27 | 22.5 | 72 ±0,2 | 63 |
| 3662208000 | 80 mm | 12 | 15 | 8 | 43 | 9 | 95 | 45 | 26.5 | 26 | 73 | 63 |
| 1827002291 | 100 mm | 13.5 | 12 | 8 | 33 | 11 | 123 | 38.5 | 26.5 | – | 103 | 103 |

| Numer materiałowy | Śr. tłoka | ØAB | AO | AT | AU ±0,2 | Ød | E | L1 | L2 | R | TG | TR |
|-------------------|-----------|------|----|---------|---------|------|-----|-----|------|------|----------|-----|
| 1827001276 | 100 mm | 14.5 | 19 | 6 ±0,5 | 41 | 11 | 117 | 52 | 26.5 | 27.5 | 89 ±0,2 | 75 |
| 3662210000 | 100 mm | 14 | 17 | 10 | 43 | 11 | 115 | 50 | 26 | 32 | 90 | 75 |
| 1827001310 | 125 mm | 16.5 | 20 | 8 ±1,0 | 45 | 13.5 | 144 | 69 | 35 | 30 | 110 ±0,3 | 90 |
| 1827001457 | 160 mm | 18.5 | 23 | 10 ±1,0 | 60 | 17.5 | 185 | 100 | 45 | 32.5 | 140 ±0,3 | 115 |
| 1827001458 | 200 mm | 24 | 26 | 12 ±1,0 | 70 | 17.5 | 220 | 120 | 47.5 | 37.5 | 175 ±0,3 | 135 |
| 1827001459 | 250 mm | 28 | 33 | 20 ±1,0 | 75 | 22 | 280 | 135 | 55 | 45 | 220 ±0,3 | 165 |
| 5239010502 | 320 mm | 35 | 45 | 23 ±1,0 | 85 | 26 | 350 | 200 | 65 | 55 | 270 ±0,3 | 200 |